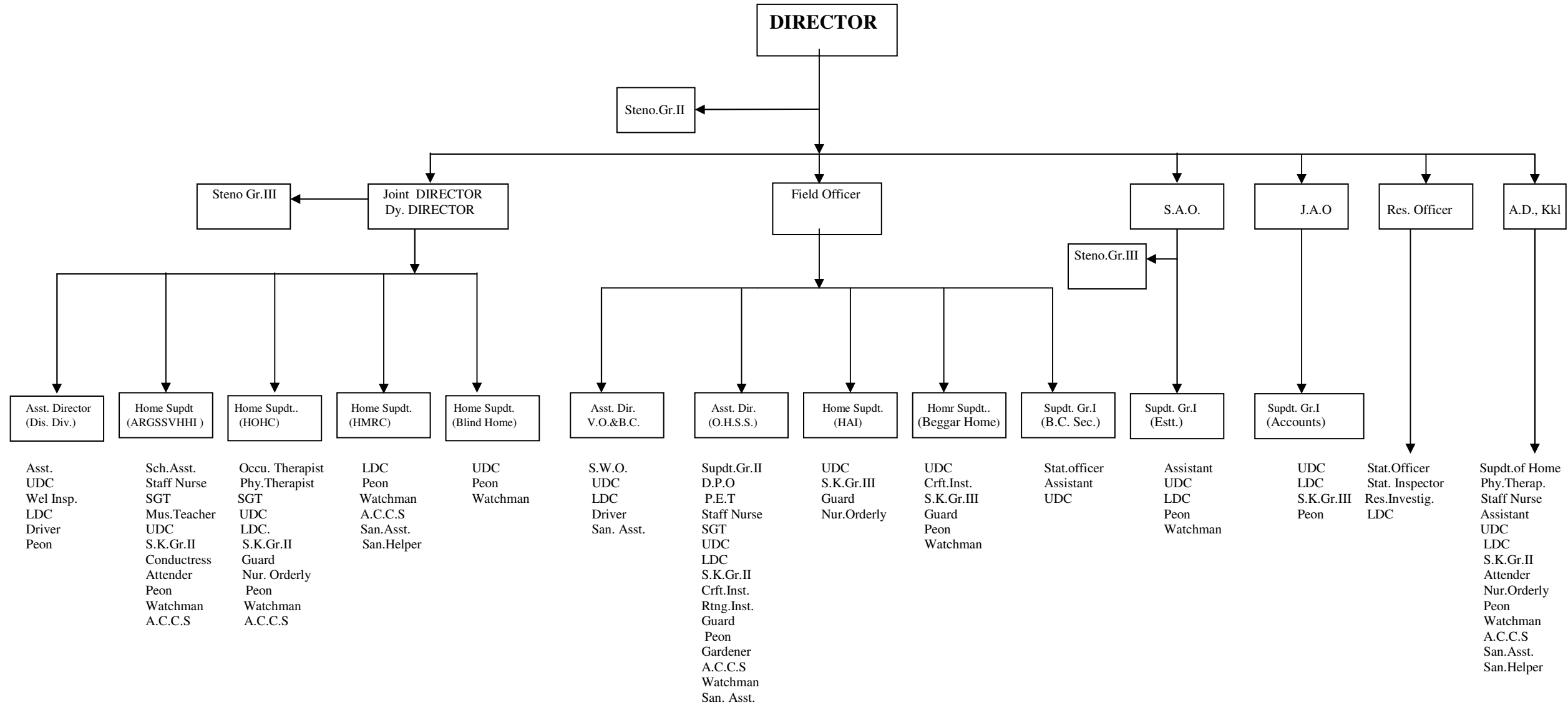


# ORGANISATIONAL CHART

## Directorate of Social Welfare



ARGSS for VH&HI:- Ananda Ranga Pillai Govt. Special School for Visually Handicapped and Hearing Impaired  
OHSS:- Observation Home and Special School

HMRC:- Home for Mentally Retarded Children  
HOHC:- Home for Orthopaedically Handicapped Children

HAI:- Home for Aged and Infirm  
V.O.&B.C.:- Voluntary Organisation and Backward Classes Section