



GOVT. OF PUDUCHERRY

DIRECTORATE OF SOCIAL WELFARE

WELCOME



Department of Social Welfare Pondicherry

Department of Social Welfare was established in the year 1964, and it was then known as Department of Social Welfare.

1980 – Bifurcated into Department of Social Welfare and
Department of AD Welfare

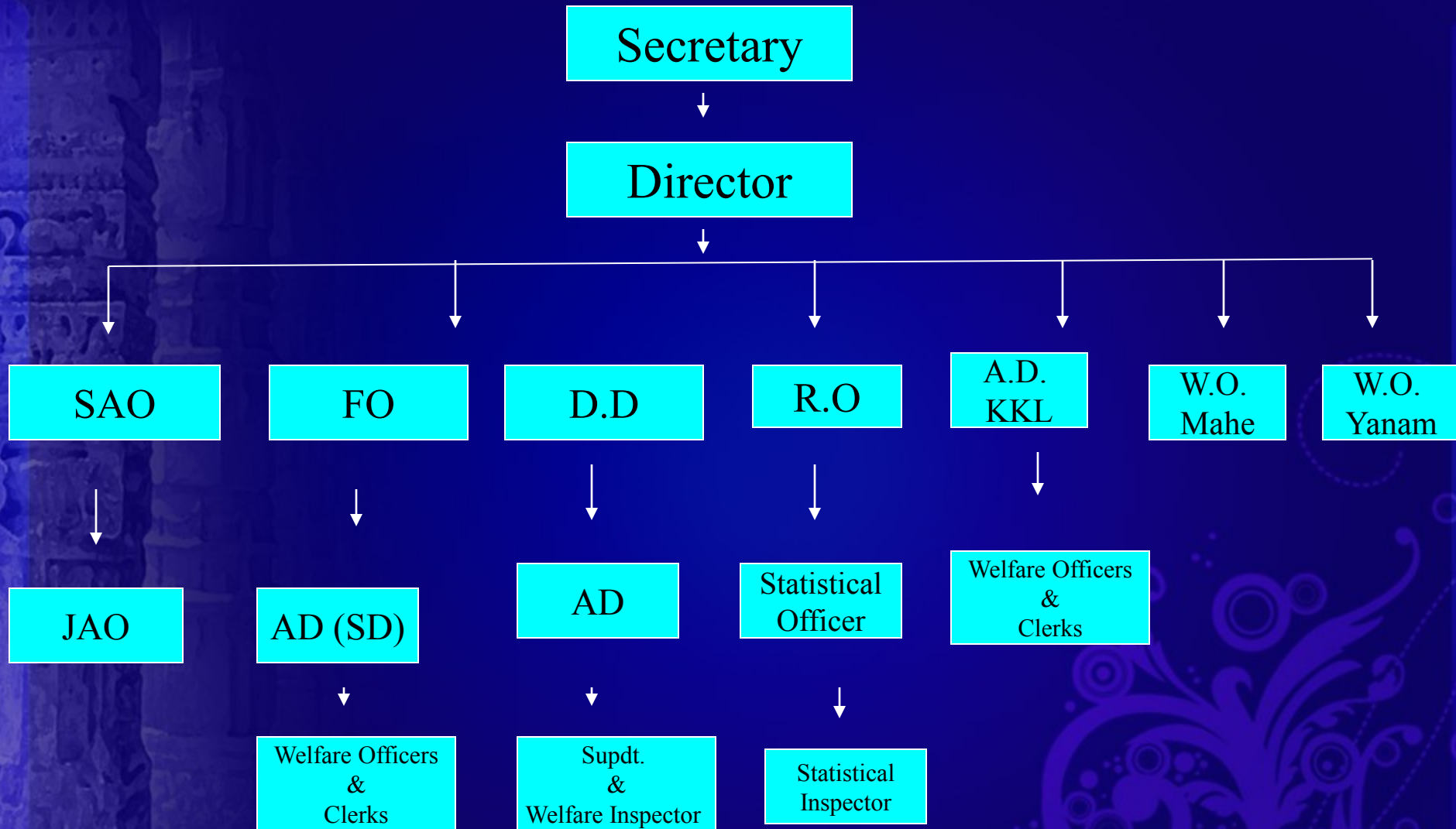
1996 – Bifurcated further into Department of Social Welfare
and Department of Women and Child Development

2015 – Bifurcated further into Department of Social Welfare
and Department Backward Classes and Minority Welfare

Activities of the Department

- ❖ Welfare of the Differently Abled Persons
- ❖ Social Defence Schemes
- ❖ Funding of NGOs, working for children, aged, destitute women and physically challenged persons
- ❖ Funding of Societies and Boards

Directorate of Social Welfare - Organization Chart



DIRECTOR

<p>DISABILITY SECTION DEPUTY DIRECTOR</p>	<p>V.O SECTION FIELD OFFICER</p>	<p>R.O SECTION RESEARCH OFFICER</p>	<p>ESTT. SECTION SAO</p>	<p>ACCTS. SECTION JAO</p>
<p>i) Welfare schemes related to Differently abled persons & PWD Act.</p>	<p>i) Schemes related to Social Defence & Social Security. (Homes / Hostels/ Spl.Schools). Voluntary Organisation</p> <p>ii) Schemes related to older persons</p>	<p>i) Evaluation and Monitoring Of schemes implemented by the Directorate.</p> <p>ii) Implementation of Prime Minister's New 15 Point Programme.</p>	<p>i) Establishment & Administration</p>	<p>i) Budget & Audit Matters.</p> <p>ii) purchase matters.</p> <p>iii) Preparation of Action Plan</p>

ACTS / RULES

- ❖ Persons With Disability Act 1995
- ❖ Women & Children Institutions (Licensing) Act, 1956
- ❖ Juvenile Justice (Care & Protection)Act, 2000 & Amended Act, 2006
- ❖ Juvenile Justice (Care & Protection)Rules, 2011
- ❖ Union Territory of Puducherry Child Protection Society (UTPCPS) Act, & Rule - 2010
- ❖ Maintenance & Welfare of Parents & Senior Citizen Act, 2007 & Rules - 2011